

Projector Data Cloning Application

Ver.1.0.5

Operation Manual

Maxell, Ltd.

Index

1. Introduction.....	4
1.1 Features	4
1.2 System Configuration	4
1.3 Target projector	5
1.4 Excluded data	6
1.4.1 Menu item	6
1.4.2 Web Control item	7
2. Installation.....	8
2.1 System Requirements	8
2.2 Projector Data Cloning Application Installation.....	9
2.3 Preparation before using this application	11
2.4 Basic operation procedure.....	12
3. Operating Instructions	14
3.1 Main Window	14
3.2 Manual Discovery window.....	17
3.3 Password Setting window.....	19
3.4 Password Authentication window	21
4. Operation.....	23
4.1 To start Projector Data Cloning Application	23
4.2 To terminate Projector Data Cloning Application.....	23
4.3 Specify Read Data Folder	23
4.4 Specify Write Data File.....	24
4.5 Update Lock Status.....	24
4.6 Read the setting data	24
4.7 Write the setting data	25
4.7.1 Check Lock Status.....	25
4.7.2 Execute write function.....	27
4.8 Disable the operating restriction.....	28
4.9 Enable the operating restriction	29
4.10 Setup password.....	30
4.11 Reset the discovery function to search projectors	32
4.12 Manual Discovery function.....	32
4.13 Choose a target projector	33
4.14 Display the version information.....	33
4.15 Check the projector status	33
5. Operating suggestions	34

- Microsoft and Windows is the registered trademark of Microsoft Corporation in the US and other countries.
- Pentium is the registered trademark of Intel Corporation in the US and other countries.
- All other trademarks are the property of their respected owners.

Warning

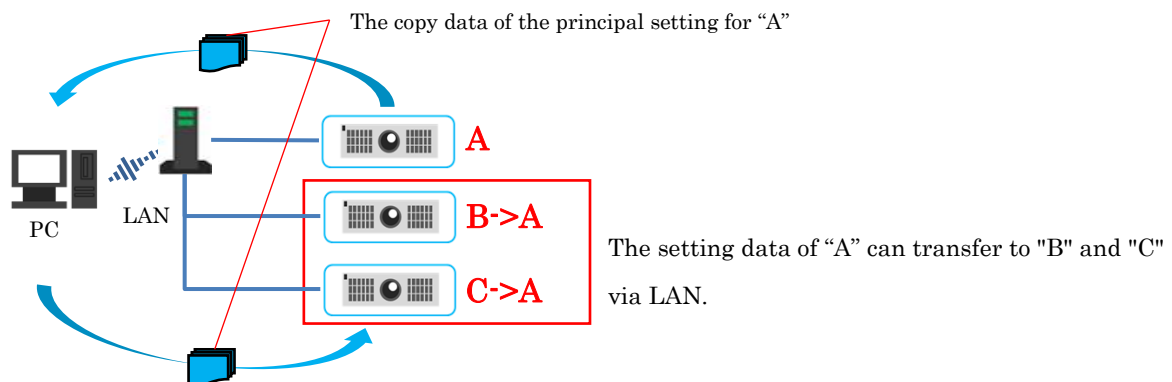
- **This software is free via download. The manufacturer has no responsibility for any errors that may occur while using this software.**
- **This software, or any product used with this software may not be used for any act which obstructs the Maintenance of the International Peace and Safety.**

If this software is to be exported, please confirm the regulation of foreign exchange law, foreign trade law, US export administration regulations and the laws and regulations of the interested state and take the necessary procedures.

1. Introduction

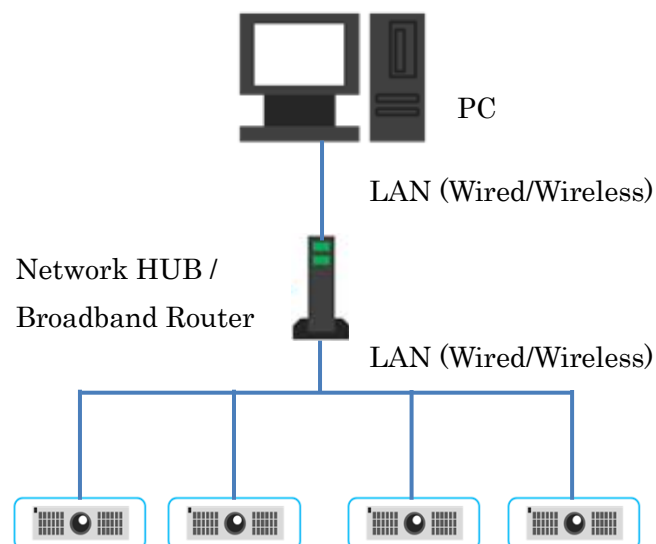
1.1 Features

Projector Data Cloning Application can copy of the setting data of a reference projector and write this setting data to another projectors. This application can read or write the setting data easily by connecting a PC to any projectors that supports this application.



1.2 System Configuration

The following diagram shows the system configuration for using Projector Data Cloning Application.



1.3 Target projector

This application can use for the following models.

Model Name	Group
MP-EU5002 MP-K5002 MP-V5002 MP-WX5503 MP-WX5603 MP-WU5503 MP-WU5603 MP-JU4001 MMP-E5010U MMP-F5010WH MMP-F6010WH MMP-F5010UH MMP-F6010UH MMP-F5310XH MMP-J3605U MMP-J3701U MMP-J4001U	A
MC-EU5001 MMX-N5010U	B

The target data to copy is different for each Group above. Check your expecting Group.

- ※ If using the projector with wireless network, you need a USB wireless adapter “USB-WL-5G” which is an optional part.

1.4 Excluded data

1.4.1 Menu item

Show some Menu items below which are excluded for data copy by this application.

The status depends on the setting of the target projector.

Menu item				Note		
SETUP	GEOMETRY CORRECTION	PERFECT FIT	PATTERN			
		PATTERN				
	LAMP & FILTER	LAMP TIME		Group B Only		
		FILTER TIME				
	LIGHT & FILTER	LIGHT SOURCE TIME		Group A Only		
		FILTER TIME				
SCREEN	MyScreen Lock			*1		
OPTION	SCHEDULE	DATE AND TIME				
	SERVICE	GHOST				
NETWORK	NETWORK SETUP	WIRELESS SETUP	MODE	*2		
			(SIMPLE ACCESS POINT mode)		For all data	
			(INFRASTRUCTURE mode)	IP ADDRESS		
				SUBNET MASK		
				SSID		*2
				ENCRYPTION		
			WIRED SETUP	IP ADDRESS		
		SUBNET MASK				
		PROJECTOR NAME				
	MY IMAGE					
	OTHER OPERATION					
	SECURITY	SECURITY PASSWORD			*3	
MyScreen PASSWORD			*4			
PIN LOCK						
TRANSITION DETECTOR						
MY TEXT PASSWORD						
MY TEXT DISPLAY			*5			
MY TEXT WRITING						

*1 Not allow to copy the data when the setting of the menu is enabled or MyScreen PASSWORD is enabled.

*2 Not allow to copy the data when Encryption Lock is enabled.

*3 The data of the target projector is excluded if changing the setting at least once.

*4 Not allow to copy the data when the setting of the menu is enabled.

*5 Not allow to copy the data when MY TEXT PASSWORD is enabled.

1.4.2 Web Control item

Show some items below of Web Control which are excluded for data copy by this application. The status depends on the setting of the target projector.

Setting item				Note	
Projector Web Control	Network Settings	Wireless Setup	Mode	Refer to “1.4.1 Menu item”	
			Encryption Lock	*6	
			Simple Access Point settings	For all data	
			Infrastructure settings	Refer to “1.4.1 Menu item”	
		Wired Setup			Refer to “1.4.1 Menu item”
	Mail Settings	Authentication	User Name	*7	
			Password		
	Date/Time Settings	Current Date			
		Current Time			
	Security Settings			*7	
	Projector Control			Refer to “1.4.1 Menu item”	
Crestron e-Control	Tools	Crestron Control	IP Address		
			IP ID		
			Port		
		Projector	Location		
			Assigned To		
		User Password	Enabled		
			Password		
		Admin Password	Enabled		
			Password		

*6 Not allow to copy the data when the setting of the target projector is enabled.

*7 Not allow to copy the data if the setting of the target projector is changed from the default setting.

2. Installation

2.1 System Requirements

The following items are the requirements of hardware and software to use Projector Data Cloning Application.

(1) Operating system

OS : Windows 10 (.NET Framework 4.5 or more)

(2) Network

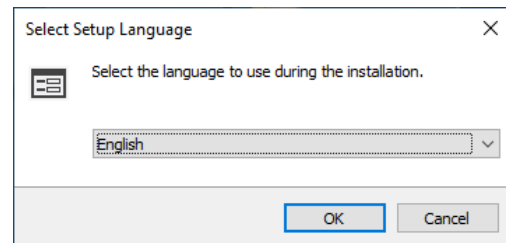
Wired LAN or Wireless LAN

2.2 Projector Data Cloning Application Installation

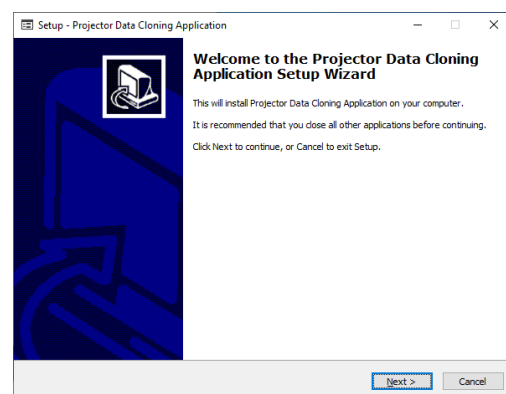
- (1) Turn on the PC and log on as Administrator.
- (2) Shut down all the other applications.

Double click the “ProjectorDataCloningApplication_v1.0.5_Setup.exe”.

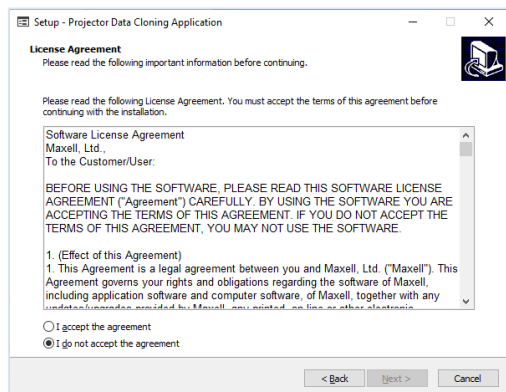
- (3) After a moment, the Select Setup Language dialog will appear. Select the language you will use in the list and click [OK].



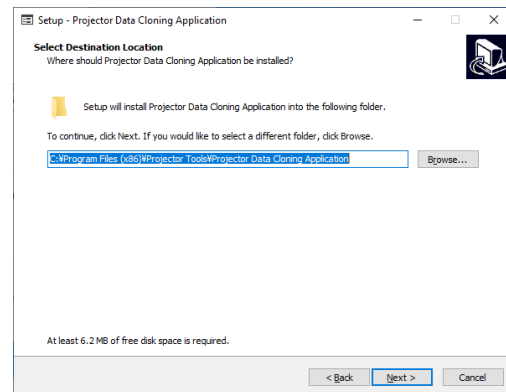
- (4) Click [Next >] when Setup Wizard is displayed.



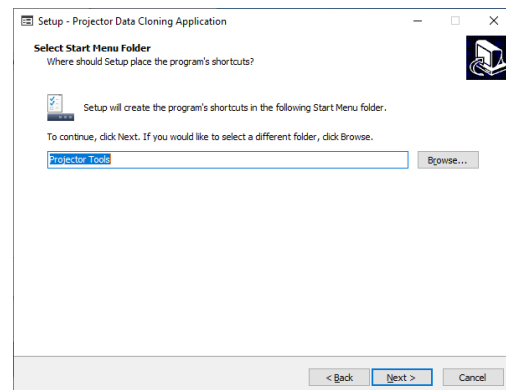
- (5) Select “I accept the agreement” and click [Next>] if you can agree to the license agreement.



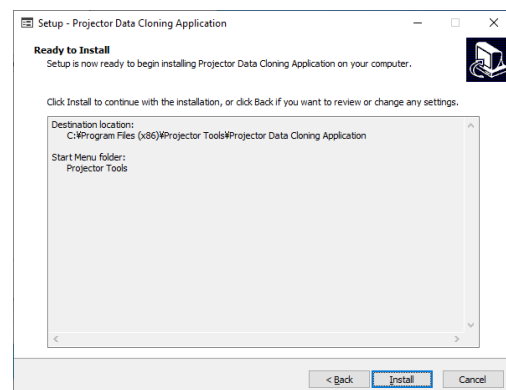
- (6) Click [Next>] after specifying a folder to install this application.



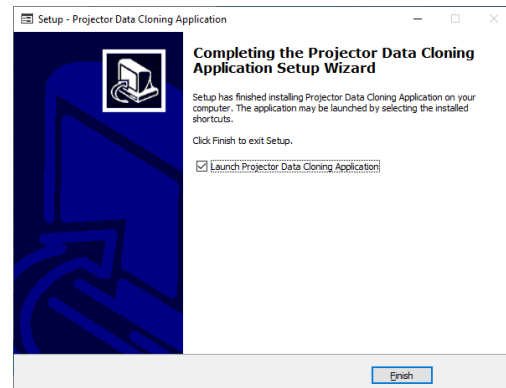
- (7) The Select Start Menu Folder diagram appears. Confirm if the name “Projector Tools” is OK to be registered in the [Start] menu’s [Program], and click [Next>]. If you want to change the folder name, please input the name you like and click [Next>].



- (8) The Ready to Install diagram appears. Click [Install].



- (9) “Completing the Projector Data Cloning Application Setup Wizard” dialog will be shown when the installation is completed. Click [Finish] to finish the installation.



2.3 Preparation before using this application

This application cannot work if the projector is in standby mode and the STANDBY MODE is set to “SAVING” or “NETWORK(WOL)” (factory default setting is “SAVING”).

Please change the setting of the STANDBY MODE to NORMAL as follows:

[ADVANCED MENU] -> [SETUP] -> [STANDBY MODE]

From “SAVING” to “NORMAL” or “QUICK START”

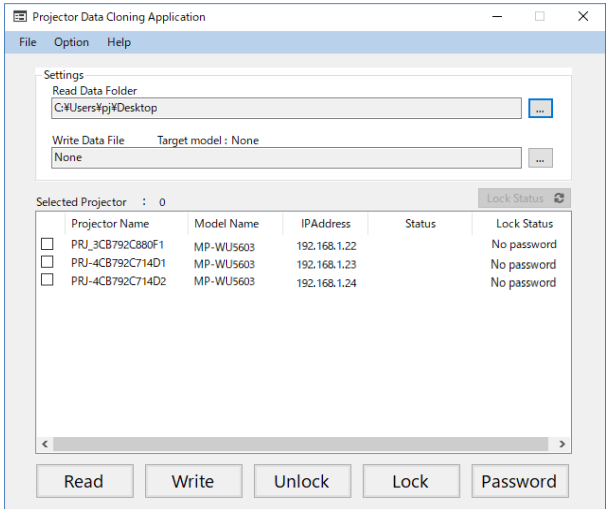
While projector is turned on, this application can be used independent of this setting.

2.4 Basic operation procedure

The basic operation procedure that reads the setting data from the primary unit and writes to the other units is following for instance.

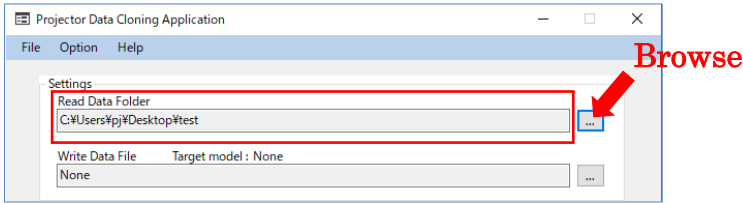
[Read process]

(1) Launch this application

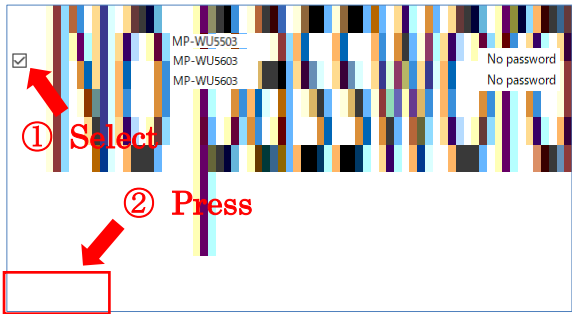


Projectors connected on the same network and supporting Cloning function can be automatically discovered and showed on the list of the app window.

(2) Set the location to save the setting data which read from the primary projector.

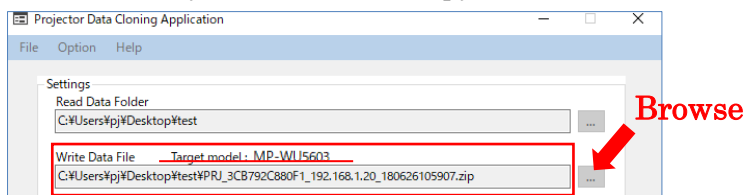


(3) Select the projector on the list in order to read the setting data and press the “Read” button.



This read process would be finished when the message of “Read:Completed” appears at the portion of “Status”. The read file would be created the location set above.

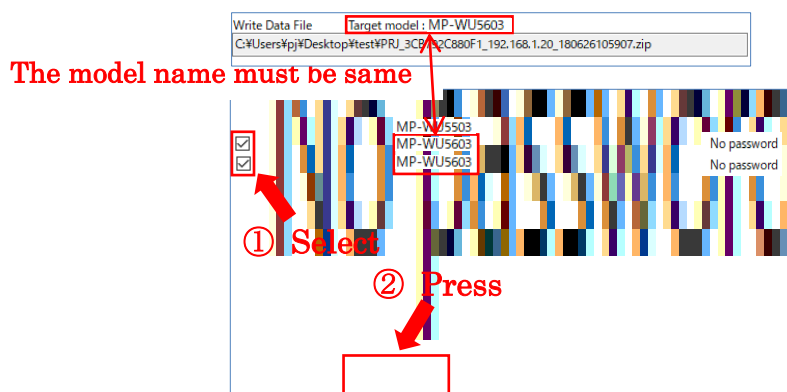
Select the file you would like to copy to the other units.



After that, the model name of the file you selected would show on “Target model”

(4) Select projectors to write the setting data and press “Write” button.

Note: Only same model projectors as Target model can be written data.



Write process will be different depending on the password condition of each projector.

The password condition determines the Lock Status displayed on the window.

Lock Status (Please refer to 4.7.1 about theses detailed information)

➤ No password: Password has not been set

The write process will proceed without setting the password but recommends to set a password to avoid the projector's setting data being rewritten without notice by a third party.

Unless a password is set, this "Lock Status" condition would be still indicate "No password" even after this process is finished.

- Lock: Operation limit has been locked with password

Password Authentication window would be appear after the “Write” button is pressed.

After the correct password is entered and authenticated, the write process will proceed.

➤ **Unlock:** Password has been set but operation limit has been released.

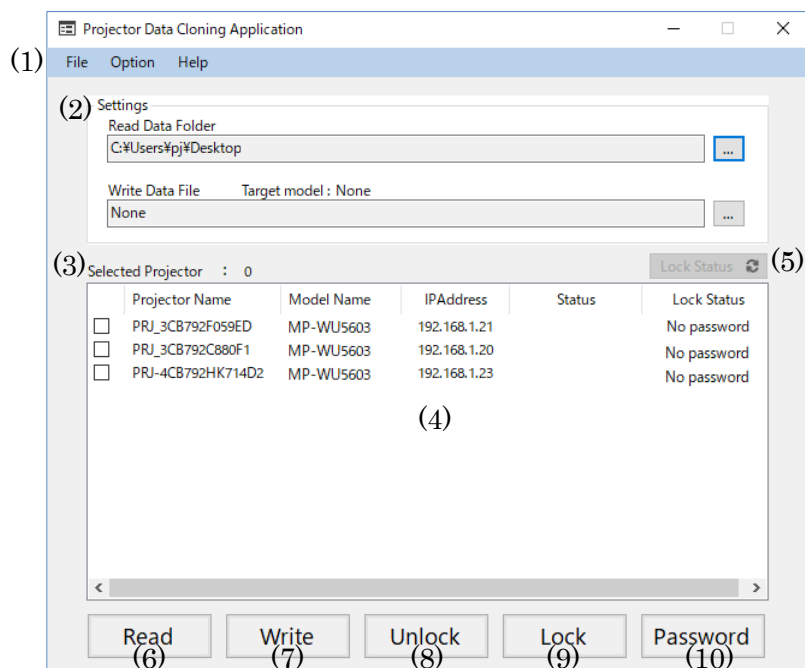
The write process will proceed after the “Write” button is pressed. After the completion of the write process, the Lock Status would be forcibly changed from “Unlock” to “Lock”.

This write process is finished when the message of “Write:Completed” appears at the portion of “Status”. The projector would then restart and then stay at standby by itself. Please refer to following pages for details.

3. Operating Instructions

3.1 Main Window

Following is Main window of Projector Data Cloning Application.



(1) Menu

Following are the menu items and function overview in Main Window

Menu	Sub Menu	Function overview	
File	Read Dara Folder	Specify a folder to save the setting data which is read from the projector.	
	Write Data File	Choose the setting data to write to the projector.	
	Exit	Quit Projector Data Cloning Application.	
Option	Discovery Reset	Reset the discovery function to search projectors. This function is used when connecting to the network after this application is activated.	
	Manual Discovery	Execute the discovery function by specifying the range for IP address to search.	
	Projector Select		Select or Cancel as the operating target from projectors which are displayed on the Main Window.
		Target Model select	Select only target projector and remove others. The projector which is disconnected from the network is not selected.
		Select all	Select all projectors except the projector which is disconnected to the network.
		Cancel all	Cancel all projectors which have already selected.
Help	Version	Show the version information of Projector Data Cloning Application.	

(2) Settings

(a) Read Data Folder

Specify a folder to save the setting data which is read from the projector. Default position is Desktop folder. When clicking [...], the selection menu of the folder is displayed.

(b) Write Data File

Choose the setting data to write to the projector. When clicking [...], the selection menu of the setting file is displayed.

If the selected file is proper for this application, the target model and the path in which this file was loaded will be shown.

If the selected file is incorrect, specific error message will appear and “None” in the part of “Write Data File” and “Target model” will be shown.

(3) Window of Selected Projector

Show the number of the selected projector in the Main Window.

(4) Content of Selected Projector

Show projectors which are supported to Projector Data Cloning Application in the same network. Followings are contents to be displayed in the Main Window.

Items	Contents
Check Box	Select projectors to operate
Projector Name	Show a projector name which is set up in the projector.
Model Name	Show a model name.
IP Address	Show an IP address of the projector.
Status	Show the status after executing the function. Reading... : Under reading Read:Completed : Success of read function Read:Error : Failure of read function Get password... : Under getting the password Password:Success : Success of the password authentication Password:Cancel : Cancellation of the password authentication Password:Error : Failure of the password authentication Unlock:Success : Success in unlocking operating restriction Unlock:Cancel : Cancellation to unlock operating restriction Unlock:Error : Failure to unlock operating restriction Lock:Success : Success in locking operating restriction Writing... : Under writing

	Write:Completed	:	Success of write function
	Rebooting...	:	Under rebooting
	Write:Error	:	Failure of write function
	Password checking...	:	Under verifying a password
	Password setting error	:	Failure of password setting

Item	Content
Lock Status	Show the status of projector operation.
	No password : Not set a password
	Lock : Enable an operating restriction
	Unlock : Disable an operating restriction
	Prohibited : Operation is prohibited
	Occupied : Under being operated by another PC
	Error : Can't get the status

When the projector is disconnected from the network environment, the text color will be changed from black to light gray.

(5) Lock Status button

Update the status by clicking Lock Status button. Please refer to “4.5 Update “Lock Status”.

(6) Read button

Read the setting data from the selected projector by clicking Read button. Please refer to “4.6 Read the setting data”.

(7) Write button

Write the setting data to the selected projector by clicking Write button. Please refer to “4.7 Write the setting data”.

(8) Unlock button

Disable the operating restriction for the selected projector by clicking Unlock button. Please refer to “4.8 Disable the operating restriction”.

(9) Lock button

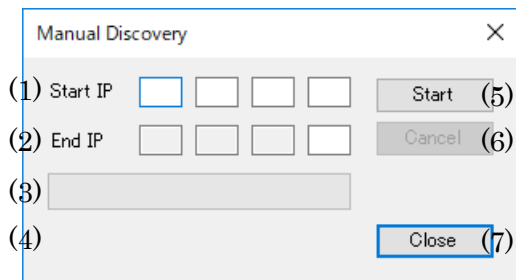
Enable the operating restriction for the selected projector by clicking Lock button. Please refer to “4.9 Enable the operating restriction”.

(10) Password button

Setup a password for the selected projector by clicking Password button. Please refer to “4.10 Setup the password”.

3.2 Manual Discovery window

Following is Manual Discovery window.



(1) Start IP

Specify the IP address as the start-point to search expecting projectors.

(2) End IP

Specify the IP address for only 4th octet as the end-point. Specified Start IP from 1st octet to 3rd octet is copied to End IP.

(3) Status of the progress

Show the status of the progress to search expecting projectors.

(4) Status of the projector

Show the status of the moment.

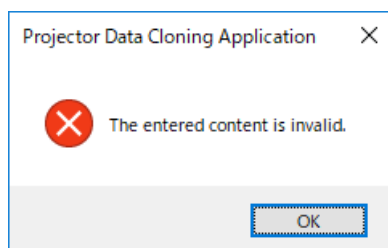
Checking... xxx.xxx.xxx.xxx: Under searching expecting projectors
(xxx.xxx.xxx.xxx is an IP address which is searching now.)

Completed: Completed to search projectors

Canceled: Canceled to search projectors

(5) Start button

Start the projector discovery function. Following message will be displayed when specifying an incorrect Start IP or End IP.



(6) Cancel button

Stop the projector discovery function under running.

(7) Close button

Close Manual Discovery window. You can't close the window when the projector discovery function is running. At that time please stop the projector discovery function by clicking Cancel button or click Close button after the projector discovery function is completed.

3.3 Password Setting window

Following is Password Setting window.

Password Setting

Projector Name : PRJ_3CB792F059ED

Model Name : MP-WU5603

IP Address : 192.168.10.32

Current Password

(1)

New Password

(2)

Hint

(3)

OK (4) Cancel (5)

(1) Enter a current password

Enter a password which has already been set in the projector. It is available to enter up to 20 characters. If the entered password is incorrect, the hint for the password reminder is shown in the bottom of Current Password window. You can't enter the current password if the projector has not yet been set up the password.

(2) Enter a new password

Enter a new password. It is available to enter up to 20 characters.

(3) Enter a hint for the password reminder

Enter a hint for the password reminder. It is available to enter up to 20 characters.

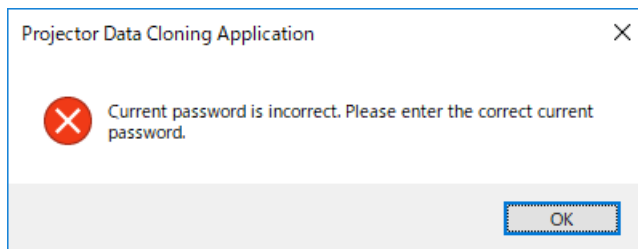
(4) OK button

Enable the password setup. If the projector has already been set up the password, please enter the current password for the password change authentication.

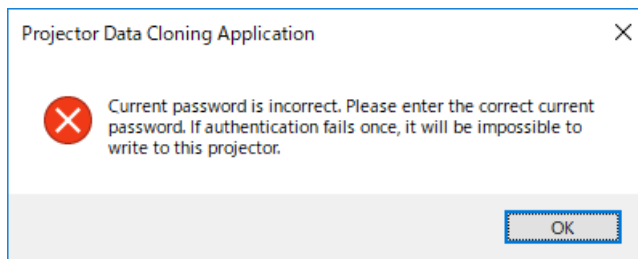
[Entered the correct password] Enter a new password.

[Entered the incorrect password] Show the following messages.

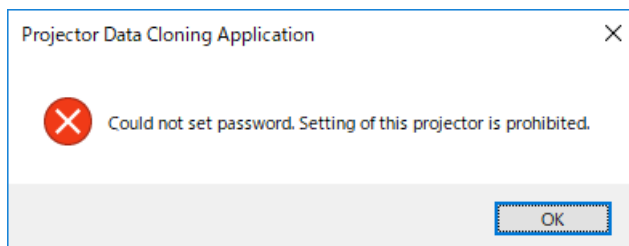
Authentication error on the first attempt



Authentication error on the second attempt

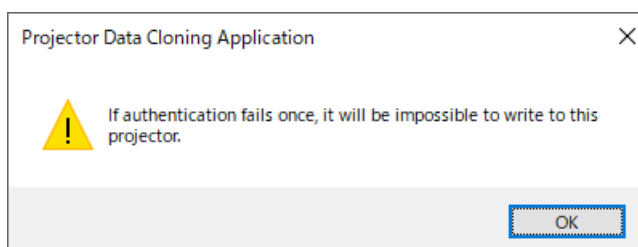


Authentication error on the third attempt



This application will not allow all setting change anymore if you entered the incorrect password three times. The number which the incorrect number is entered is stored to the projector and it is not cleared until you enter the correct password.

When showing Password Setting window if you have already entered the incorrect password two times, show the following message.

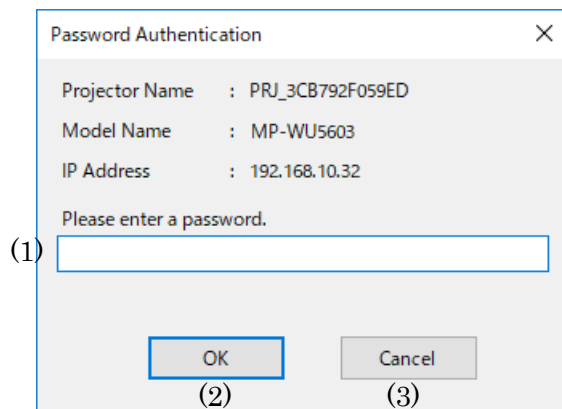


(5) Cancel button

Close Password Setting window after the password setup is canceled.

3.4 Password Authentication window

Following is Password Authentication window.



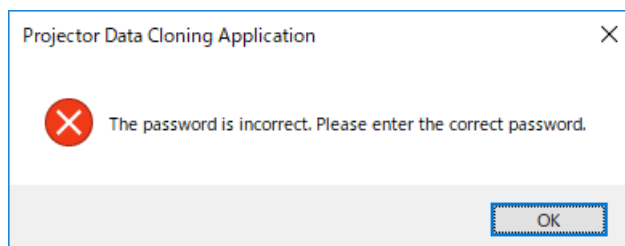
(1) Enter a password

Enter a password which has already been set up in the projector. It is available to enter up to 20 characters. If the entered password is incorrect, the hint for the password reminder is shown in the bottom of Password Authentication window.

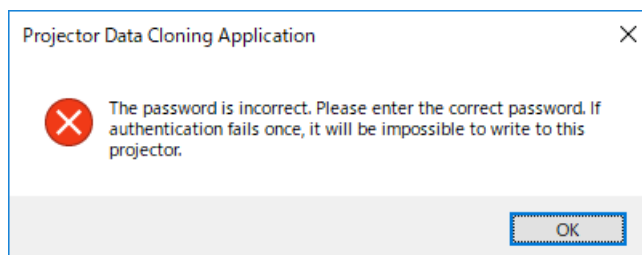
(2) OK button

Execute the password authentication by clicking OK button. If the entered password is incorrect, show the following messages.

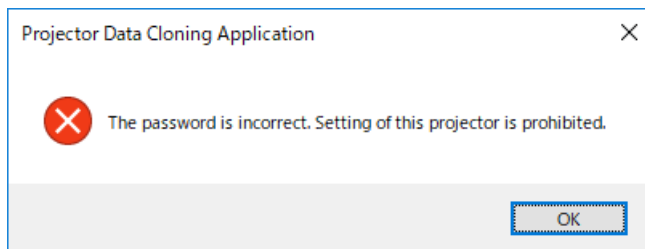
Authentication error on the first attempt



Authentication error on the second attempt

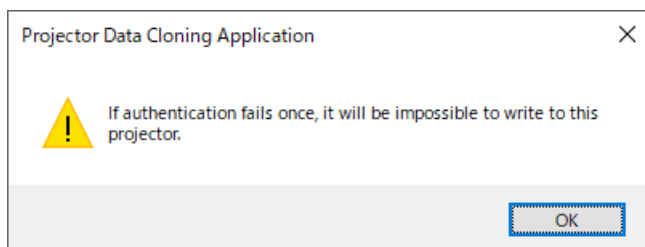


Authentication error on the third attempt



This application will not allow all setting change anymore if you entered the incorrect password three times. The number which the incorrect number is entered is stored to the projector and it is not cleared until you enter the correct password.

When showing Password Setting window if you have already entered the incorrect password two times, show the following message.



(3) Cancel button

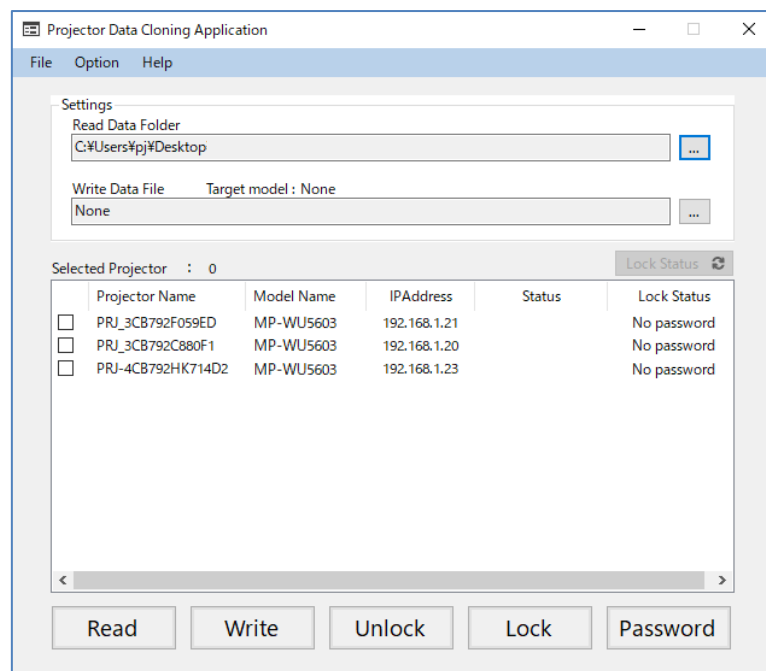
Close Password Authentication window after the password authentication is canceled.

4. Operation

4.1 To start Projector Data Cloning Application

The following steps are how to start this application.

- (1) Click “Start” button on the Windows OS.
- (2) Select “Projector Tools” and then “Projector Data Cloning Application”. Or double click a shortcut icon of “Projector Data Cloning Application”.
- (3) If this application is started, you can see the following window.



4.2 To terminate Projector Data Cloning Application

The following steps show how to terminate the application.

- (1) Select “File” and the “Exit” from the main window.
- (2) Click “x” icon in the upper right side.

When terminating Projector Data Cloning Application, a confirmation message will be displayed. But you can't terminate the application while executing read function or write function. At that time please terminate the application after those functions are completed.

4.3 Specify Read Data Folder

Specify a folder as Read Data Folder to store the setting data which read from the target projector. To specify the folder, you need to select “File” and then “Read Data Folder...” from the menu of the Main window, or to operate the selection screen which is displayed by clicking “...” button next to entry fields of Read Data Folder in the Main window. Default location is indicated onto the desktop.


4.4 Specify Write Data File

Specify a file as Write Data File to write the setting data to the target projector.

To specify the file, you need to select “File” and then “Write Data File...”, or to operate the selection screen which is displayed by clicking “...” button next to entry fields of Write Data File in the Main window.

4.5 Update Lock Status

Update the Lock Status which is displayed as the list in the Main window.

You can get the updated status after the currently displayed status is cleared by clicking “Lock Status ” button in the Main window.

4.6 Read the setting data

Choose one target projector from the displayed list in the Main window and click “Read” button. Then the setting data is read from the projector. After that the data is stored as the file which is named like “Projector1(projector name)_192.168.10.1(IP address)_171221093040(Year/Month/Date/Time).zip” on the specified folder.

Year/Month/Date/Time is indicated as a format of yyMMddHHmmss(yy: year, MM: month, dd: day, HH: hour, mm: minute, ss: second).

The status will be changed to “Reading...” at the beginning of the read function.

	Projector Name	Model Name	IPAddress	Status	Lock Status
<input checked="" type="checkbox"/>	PRJ_3CB792F059ED	MP-WU5603	192.168.10.32	Reading...	No password

The read function is completed after displaying “Read:Completed” as blue letters in the status field.

	Projector Name	Model Name	IPAddress	Status	Lock Status
<input checked="" type="checkbox"/>	PRJ_3CB792F059ED	MP-WU5603	192.168.10.32	Read:Completed	No password

In case of failure to read the setting data, “Read:Error” is displayed as red letters in the status field.

	Projector Name	Model Name	IPAddress	Status	Lock Status
<input checked="" type="checkbox"/>	PRJ_3CB792F059ED	MP-WU5603	192.168.10.32	Read:Error	No password

4.7 Write the setting data

Choose some target projectors from the displayed list in Main window and click “Write” button. Then the setting data which is selected on the window of Write Data File is transferred. If choosing several projectors, the setting data will be transferred one by one.

Plus, only models that are the same with the Target model can be written with the setting data.

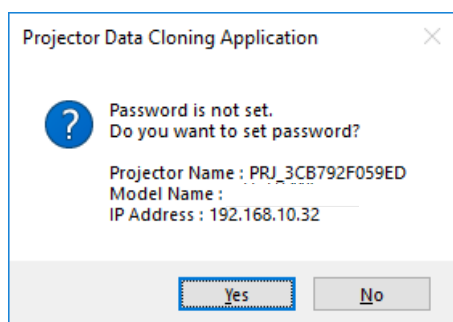
If there are models that are different from the Target model in the selected models, a specific error message will be shown and this operation will be interrupted.

4.7.1 Check Lock Status

If clicking “Write” button, this application starts to check Lock Status of selected projectors at first. Subsequent action is different according to the condition of Lock Status.

(1) The case that a password is not set (Lock Status: No password)

When sending the setting data to a projector which a password is not set, the following message is shown.



If you want to set the password, choose “Yes”. If not, “No”.

When choosing “Yes”, Password Setting window is displayed. Please refer to “3.3 Password Setting window” to get more detailed information. The write function is executed after setting the password or canceling the password setting function.

When choosing “No”, the password setting function is skipped and then the write function is executed.

(2) The case that a password has already set and the operating restriction is enabled (Lock Status: Lock)

When sending the setting data to a projector which a password has already set and the operating restriction is enabled, Password Authentication window is displayed. Please refer to “3.4 Password Authentication window” to get more detailed information. Write function is executed when a correct password is entered in the

Password Authentication window and then the operating restriction is disabled.

The write function is aborted after “Password:Cancel” is displayed when the password setting function is canceled in the Password Authentication window.

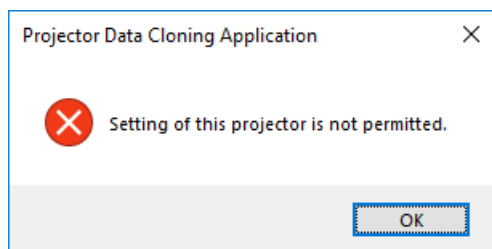
If the operation is prohibited by entering an incorrect password in the Password Authentication window, the write function is aborted after “Password:Error” is displayed in Status window and “Prohibited” is displayed in Lock Status window.

- (3) The case that a password has already set and the operating restriction is disabled (Lock Status: Unlock)

When sending the setting data to a projector which a password has already set and the operating restriction is disabled, the write function is executed.

- (4) The case that the operation is prohibited (Lock Status: Prohibited)

When sending the setting data to a projector which the operation is prohibited, the following message is displayed and the write function is not executed. At that time “Write:Error” is displayed in the status window.



- (5) The case that the operating restriction is disabled by another PC (Lock Status: Occupied)

When sending the setting data to a projector which the operating restriction is disabled by another PC, “Write:Error” is displayed in the status window and the write function is not executed.

- (6) The case that can't get Lock Status (Lock Status: Error)

When sending the setting data to a projector which can't get Lock Status, “Write:Error” is displayed and the write function is not executed.

4.7.2 Execute write function

When stating the write function for the setting data, the status will be “Writing...”.

	Projector Name	Model Name	IPAddress	Status	Lock Status
<input checked="" type="checkbox"/>	PRJ_3CB792F059ED	MP-WU5603	192.168.10.32	Writing...	Unlock

Reboot automatically to configure the setting data after the write function. At that time the status will be “Rebooting...”. If turning the light source on, go to standby status after turning the light source off.

	Projector Name	Model Name	IPAddress	Status	Lock Status
<input checked="" type="checkbox"/>	PRJ_3CB792F059ED	MP-WU5603	192.168.10.32	Rebooting...	Unlock

When “Write:Completed” in blue letters is displayed in Status window, the write function will be completed. If the password setting is enabled, Lock Status will be “Lock”.

	Projector Name	Model Name	IPAddress	Status	Lock Status
<input checked="" type="checkbox"/>	PRJ_3CB792F059ED	MP-WU5603	192.168.10.32	Write:Completed	Lock

When getting failure to configure the setting data, “Write:Error” in red letters is displayed in Status window.

	Projector Name	Model Name	IPAddress	Status	Lock Status
<input checked="" type="checkbox"/>	PRJ_3CB792F059ED	MP-WU5603	192.168.10.32	Write:Error	Unlock

After “Write:Completed” is displayed in Status window, the indicator of POWER will be turned off after a few moments. When the indicator is turned on, the copy of the setting data will be completed.

4.8 Disable the operating restriction

Choose some target projectors to disable the operating restriction from the displayed list in Main window and click “Unlock” button. Then the password authentication is started after displaying Password Authentication window. If the function is successful, the operating restriction will be disabled. If choosing several projectors, the password authentication will be executed one by one. When clicking “Unlock” button, this application starts to check Lock Status of selected projectors at first. Then Subsequent action is different according to the condition of Lock Status.

(1) The case that a password is not set (Lock Status: No password)

When sending the setting data to a projector which a password is not set, the status window is cleared.

(2) The case that a password has already set and the operating restriction is enabled (Lock Status: Lock)

When choosing a projector which a password has already set and the operating restriction is enabled, Password Authentication window is displayed. Please refer to “3.4 Password Authentication window” to get more detailed information.

When a correct password is entered in the Password Authentication window and the operating restriction is disabled, “Unlock:Success” is displayed in Status window and the status in Lock Status window is “Unlock”. If canceling to enter the password in the Password Authentication window, display “Unlock:Cancel” in Status window and stop to disable the operating restriction.

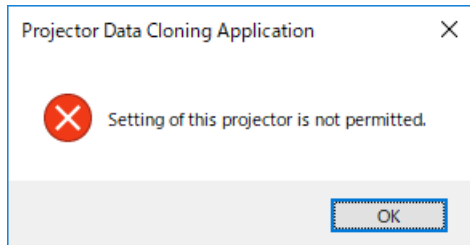
If the operation is prohibited by entering an incorrect password in the Password Authentication window, “Unlock:Error” is displayed in Status window and “Prohibited” is displayed in Lock Status window. Then stop to disable the operating restriction.

(3) The case that a password has already set and the operating restriction is disabled (Lock Status: Unlock)

When a password has already set and the operating restriction is disabled, “Unlock:Success” is displayed in Status window.

(4) The case that the operation is prohibited (Lock Status: Prohibited)

When choosing a projector which the operating restriction is enabled, the following message is displayed and the status of the operating restriction is maintained. Then the status will be “Unlock:Error”.



(5) The case that the operating restriction is disabled by another PC (Lock Status: Occupied)

When choosing a projector which the operating restriction is disabled by another PC, “Unlock:Error” is displayed in Status window and the status of the operating restriction is maintained.

(6) The case that can't get Lock Status (Lock Status: Error)

When can't get Lock Status, “Unlock:Error” is displayed and the status of the operating restriction is maintained.

4.9 Enable the operating restriction

When choosing some target projectors which the operating restriction is disabled and clicking “Lock” button, return the status which the operating restriction is enabled. If choosing several projectors, the function is executed one by one.

When changing from non-operating restriction to enabling the operating restriction, “Lock:Success” is displayed in Status window and Lock Status is updated to “Lock”.

4.10 Setup password

When choosing a projector to set a password and clicking “Password” button, Password Setting window is displayed to set the password.

If clicking “Password” button, start to check the status of Lock Status for the selected projector at first. Subsequent action is different according to the condition of Lock Status.

(1) The case that a password is not set (Lock Status: No password)

When choosing a projector which a password is not set, Password Setting window is displayed to set the password. Please refer to “3.3 Password Setting window” to get more detailed information.

If getting successful for setting the password, “Password:Success” is displayed in Status window and Lock Status is updated to “Unlock”.

(2) The case that a password has already set and the operating restriction is enabled (Lock Status: Lock)

When choosing a projector which a password has already been set and the operating restriction is enabled, Password Setting window is displayed to enter the password. Please refer to “3.3 Password Setting window” to get more detailed information.

When a correct password is entered to Current Password in the Password Setting window, the function is enabled.

If the function is successful, “Password:Success” is displayed in Status window and Lock Status is updated to “Unlock”. If clicking Cancel button in Password Setting window, “Password:Cancel” is displayed in Status window and the function is stopped. If the operation is prohibited by entering an incorrect password in Password Setting window, “Password:Error” is displayed in Status window and “Prohibited” is displayed in Lock Status window. Then the function is suspended.

(3) The case that a password has already set and the operating restriction is disabled (Lock Status: Unlock)

When choosing a projector which a password has already set and the operating restriction is disabled, Password Setting window is displayed to set the password. Please refer to “3.3 Password Setting window” to get more detailed information.

When a correct password is entered to Current Password in the Password Setting window, the function is enabled.

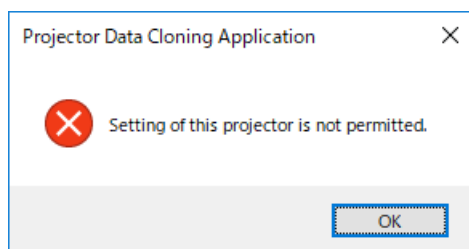
If the function is successful, “Password:Success” is displayed in Status window. If clicking Cancel button in Password Setting window, “Password:Cancel” is displayed

in Status window and the function is suspended.

If the operation is prohibited by entering an incorrect password in Password Setting window, “Password:Error” is displayed in Status window and “Prohibited” is displayed in Lock Status window. Then the function is suspended.

(4) The case that the operation is prohibited (Lock Status: Prohibited)

When choosing a projector which the operating restriction is enabled, the following message is displayed and the status of the operating restriction is maintained. Then the status will be “Password setting:Error”.



(5) The case that the operating restriction is disabled by another PC (Lock Status: Occupied)

When choosing a projector which the operating restriction is disabled by another PC, “Password setting:Error” is displayed in Status window and the function is suspended.

(6) The case that can't get Lock Status (Lock Status: Error)

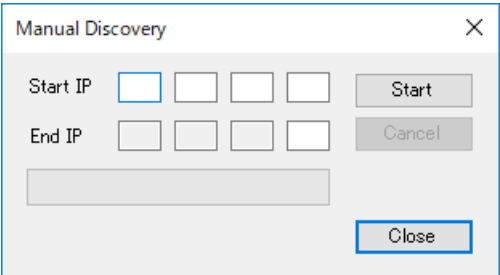
When can't get Lock Status, “Password setting:Error” is displayed and the function is suspended.

4.11 Reset the discovery function to search projectors

When connecting to the network after this application is activated, there is a case that can't search projectors by the discovery function. If the function doesn't work well, please choose [Option] → [Discovery Reset] in Main window.
If can't search projectors after executing the reset for the discovery function, please refer "4.12 Manual discovery function" and try to do it.

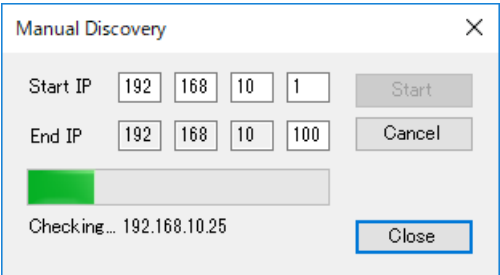
4.12 Manual Discovery function

When choosing [Option] → [Manual Discovery...] in Main window, the following message is displayed. Please refer "3.2 Manual Discovery window" to get more detailed information.



The image shows a 'Manual Discovery' dialog box. It has a title bar with a close button (X). Inside, there are two rows of input fields. The first row is labeled 'Start IP' and has four empty boxes followed by a 'Start' button. The second row is labeled 'End IP' and has four empty boxes followed by a 'Cancel' button. Below these is a large empty text area. At the bottom right is a 'Close' button.

When clicking Start button after entering Start IP address and End IP address, the function starts to search projectors between Start IP address and End IP address.



The image shows the 'Manual Discovery' dialog box during a search. The 'Start IP' field now contains the values 192, 168, 10, and 1. The 'End IP' field contains 192, 168, 10, and 100. A green progress bar is visible below the input fields. Below the progress bar, the text 'Checking... 192.168.10.25' is displayed. The 'Start' button is now disabled, and the 'Close' button is highlighted.

When the function can find a projector which is not displayed on the list in Main window, the projector is added onto the list. If a projector is found by the Manual Discovery function, there is no projector name. If a model is searched newly, it might take a while to find the model. Please do not disconnect the projector during this period.

	Projector Name	Model Name	IPAddress	Status	Lock Status
<input type="checkbox"/>		VF1175000000	192.168.1.21		No password

4.13 Choose a target projector

If selecting [Option] → [Projector Select] → [Target Model select] from the menu in Main window, all projectors as same as the projector which is displayed at the Target model of Write Data File are selected. Other projectors will be deselected.

When choosing [Option] → [Projector Select] → [Select all] in Main window, all of projectors which is displayed on the list can be selected. But if the projector is disconnected from the network, it isn't possible to select the projector.

If selecting [Option] → [Projector Select] → [Cancel all] from the menu in Main window, you can cancel all selected projectors on the list.

4.14 Display the version information

When choosing [Help] → [Version] in Main window, display the version information for this application.

4.15 Check the projector status

The status checks are performed for all projectors which are displayed in Main window. If there are not any replies from a projector, the letter color turns gray, "Projector Name" is blank, "Unknown" is displayed as "Model Name".

	Projector Name	Model Name	IPAddress	Status	Lock Status
<input type="checkbox"/>		Unknown	169.254.117.39		No password

If the letter color is gray, the check box is off purposely, and you cannot do the operation. If the IP Address of the projector can be found, the displayed information is overwritten.

If the projector cannot be found even if it is connected, please search the projector by using the Manual Discovery. Please refer to "4.12 Manual Discovery function" for details.

5. Operating suggestions

- Please launch this application software with the administrator rights. If it is not the administrator rights, some functions might not work normally.
- A key input function of a target projector is not available during processing.
- If disconnected from the network during processing, the key input function of a target projector is not available in a few minutes. At that time please try once more after three minutes.
- If disconnected from the network during processing, any operation is disabled in a few minutes after re-connecting. At that time please try once more after three minutes.
If error message is displayed over three minutes, please execute Network Reset from Projector Web Control or plug off after moving to standby status. Refer network guide of the projector about how to operate Projector Web Control.
- If STANDBY MODE of projector setting is selected to SAVING or NETWORK(WOL), this application can't access to the projector. Please turn the projector on to enable the operation of this application.
- A projector that "Model name" is "Unknown" in the list, cannot use the Cloning function.
- In a case that the firewall software which is not provided by Microsoft Windows Operating System is installed, there are some potential that this application doesn't work well. Please do registration exception for this application or disable the firewall software during using this application.
- When accessing to the PC which is operating this application from another PC or connecting to a target projector by other applications, there are some potential that this application doesn't work well.
- If you make three mistakes for password authentication, any access will be prohibited onto the projector. Please contact to your dealer for getting how to deactivate at that time.